

EPROM Programmer for the SYM-1

Revision: 3-15-88

Title : Port Assignments

<u>Port A (i/o port)</u>	<u>Port B (control port)</u>	<u>Port C (config port)</u>
7- i/o	7- Vcc ON	7- Vpp sel 1
6- i/o	6- n.c	6- Vpp sel 0
5- i/o	5- n.c	5- pin sel 1
4- i/o	4- PGM	4- pin sel 0
3- i/o	3- OE	3- 6V sel
2- i/o	2- CE	2- 5V sel
1- i/o	1- RST 4040	1- PGM/A14 (pin 27)
0- i/o	0- CLK 4040	0- Vcc/A13 (pin 26)

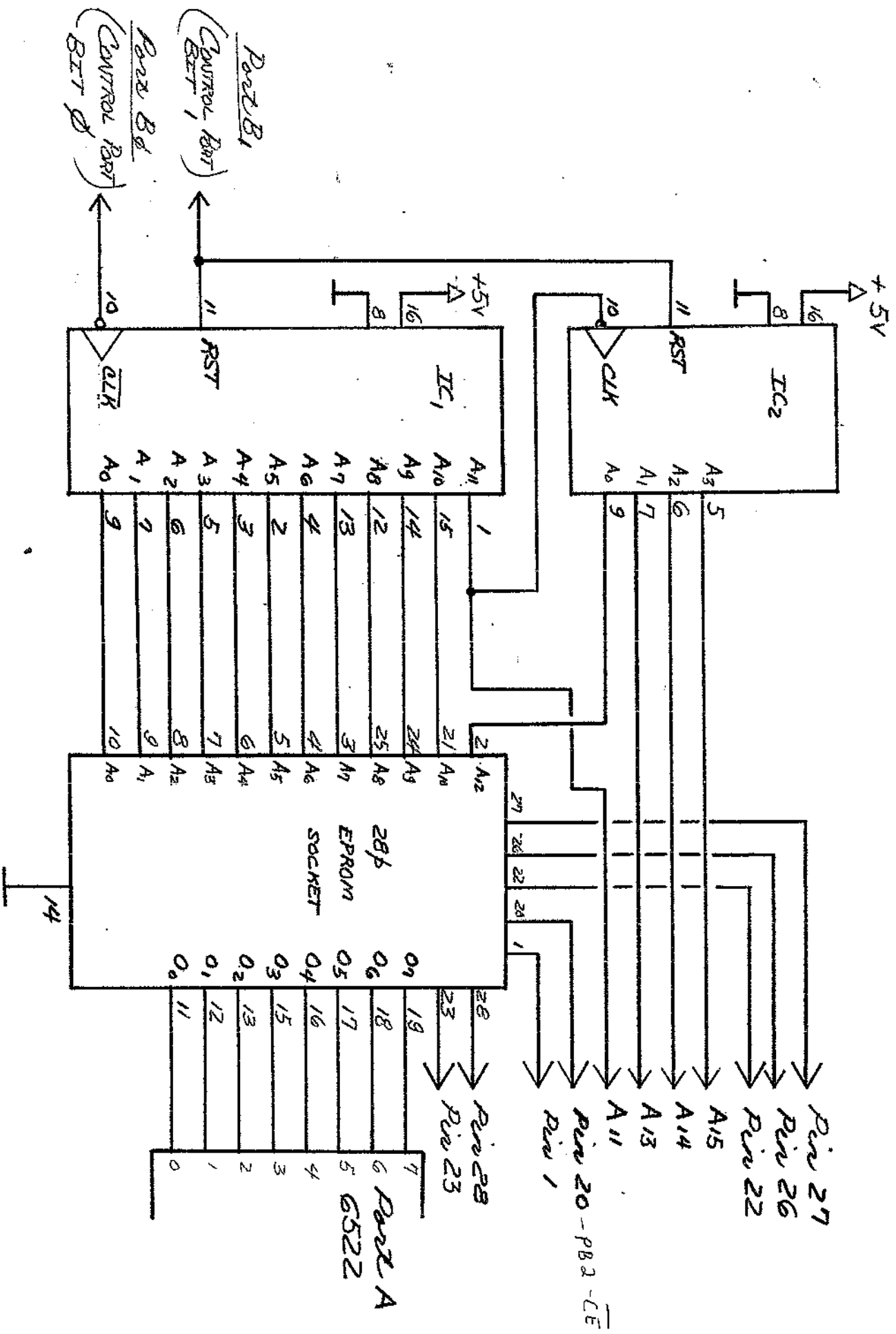
Port A= \$A001 (6522, U25)

Port B= \$A000 (6522, U25)

Port C= \$AC00 (6522, U29)

*EPROM Programmer for the 5100-1  
 Revision: 3-15-88  
 Title: Address Generator*

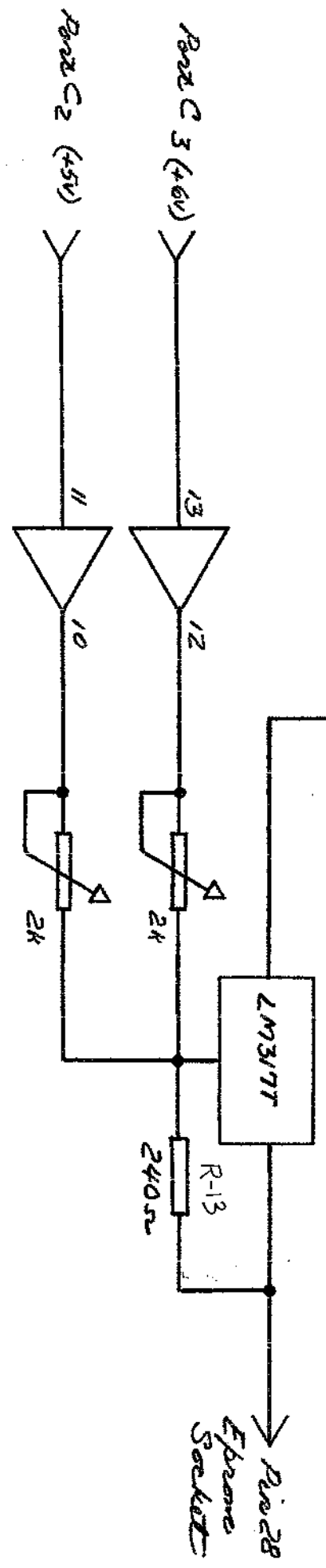
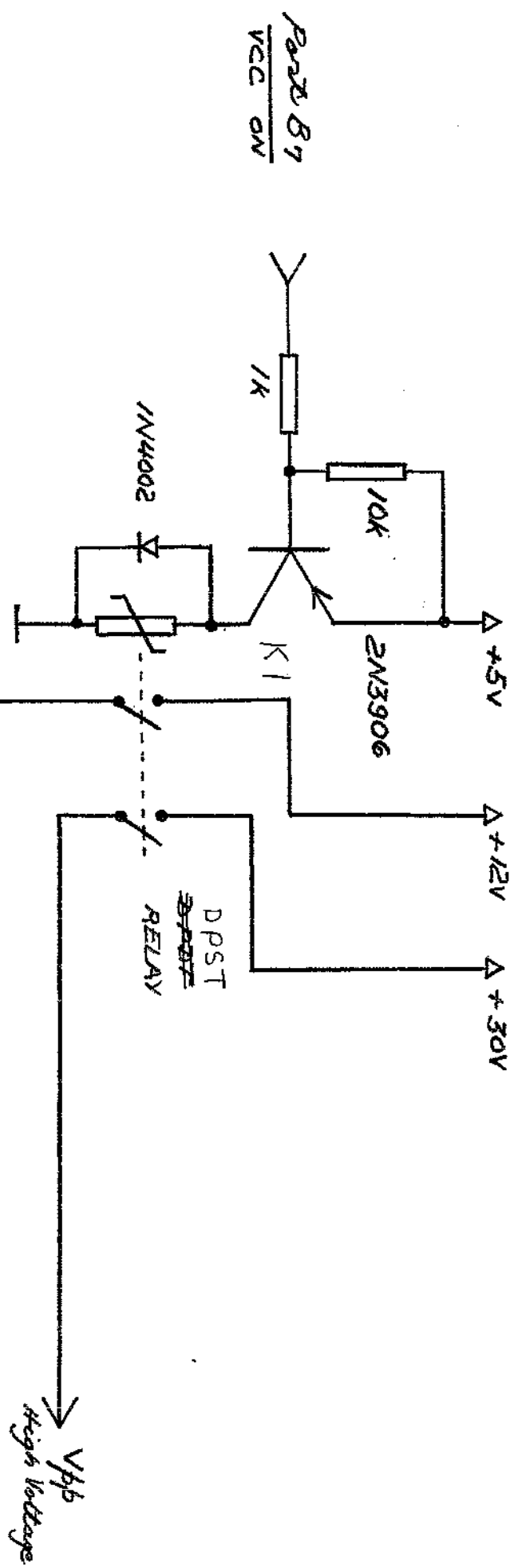
*PP*



IC<sub>1</sub>, IC<sub>2</sub> = 4040

EPROM Programmer for the 2708-1  
 Revision: 3-15-88  
 Tests: +5V, +6V Voltage reset

RP

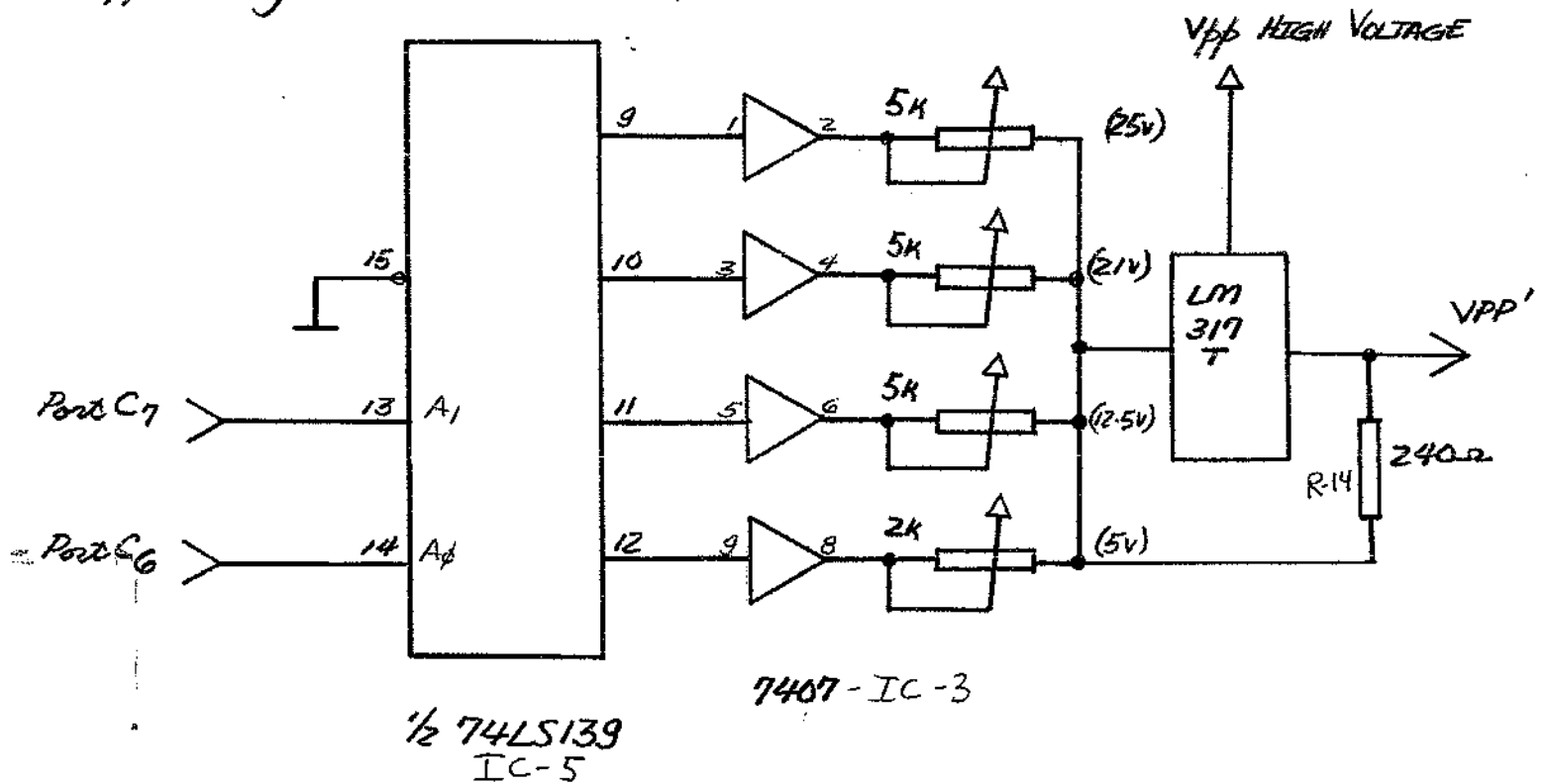


7407 = IC-3

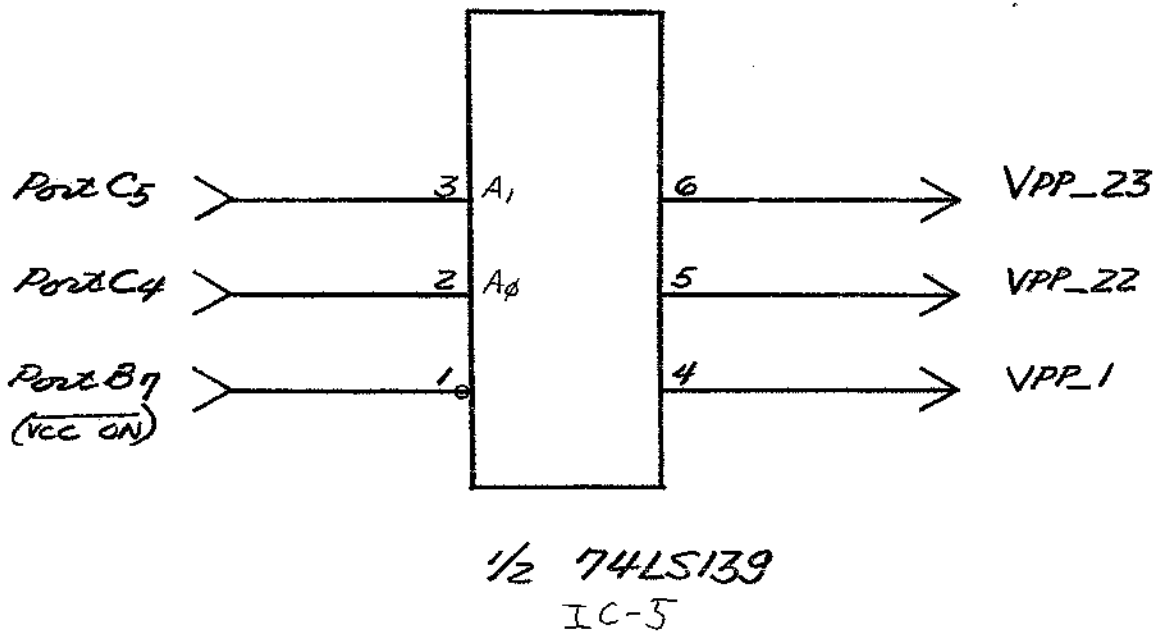
EPROM Programmer for the 51M-1  
 Revision: 3-15-88  
 Title: Vpp Voltage - Vpp Pin Select

*[Handwritten signature]*

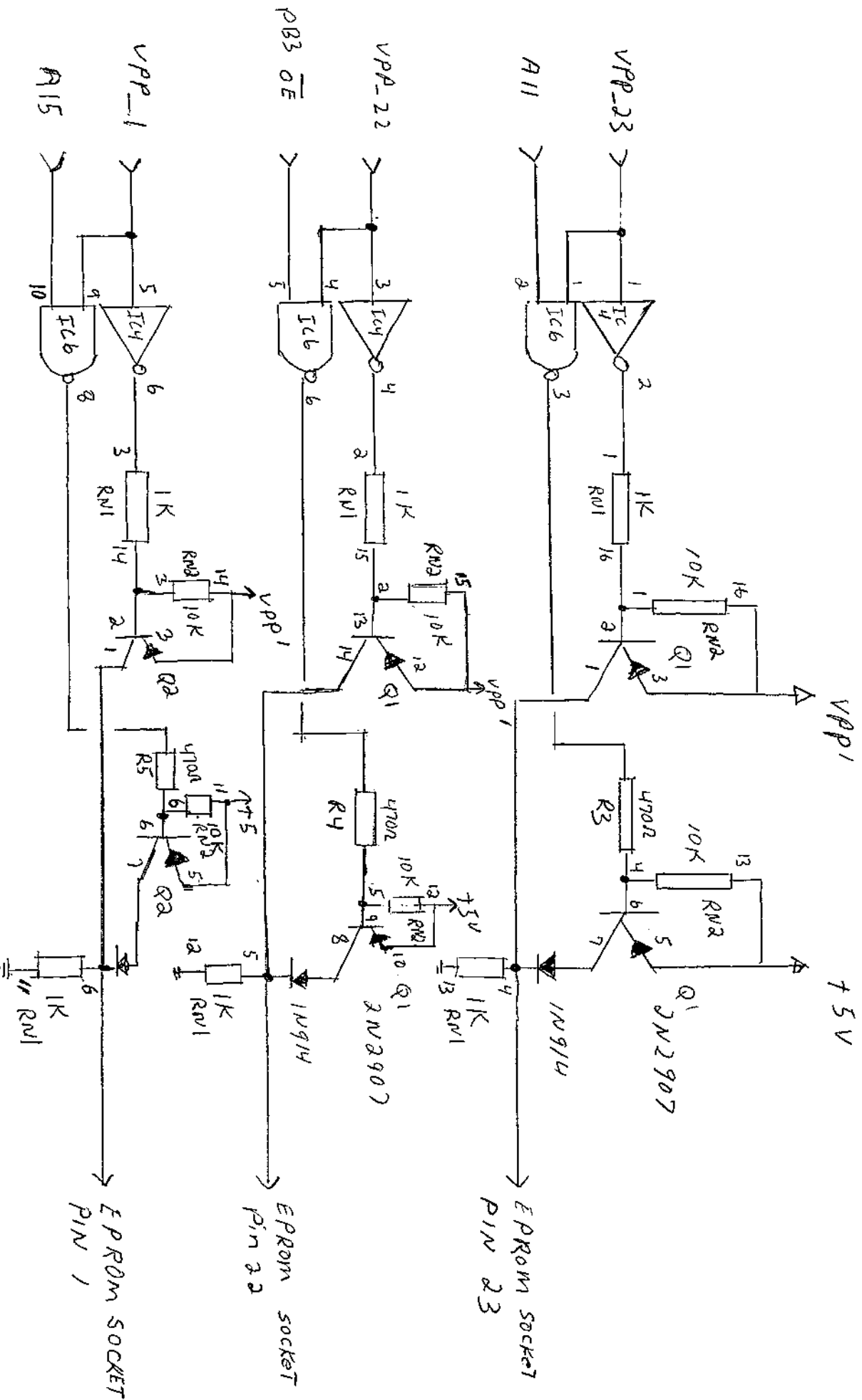
~Vpp Voltage Select~



~Vpp Pin Select~

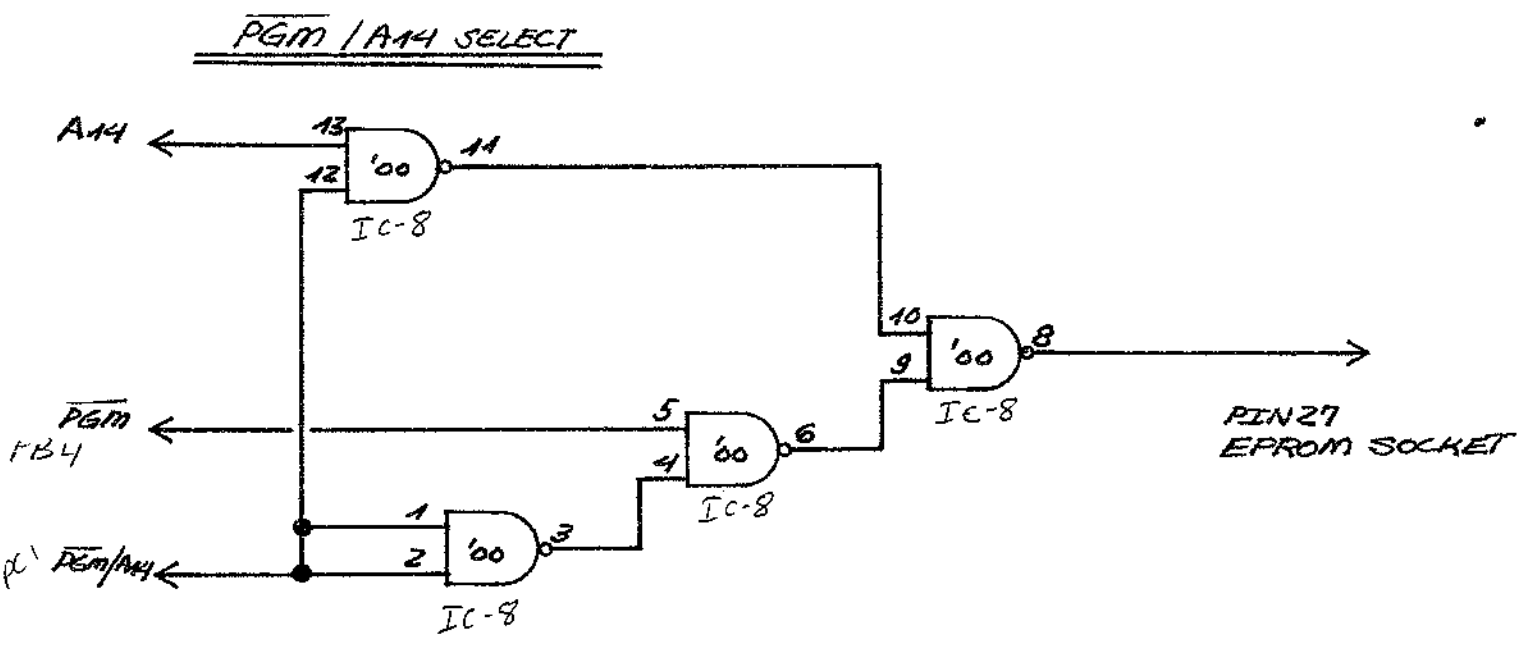
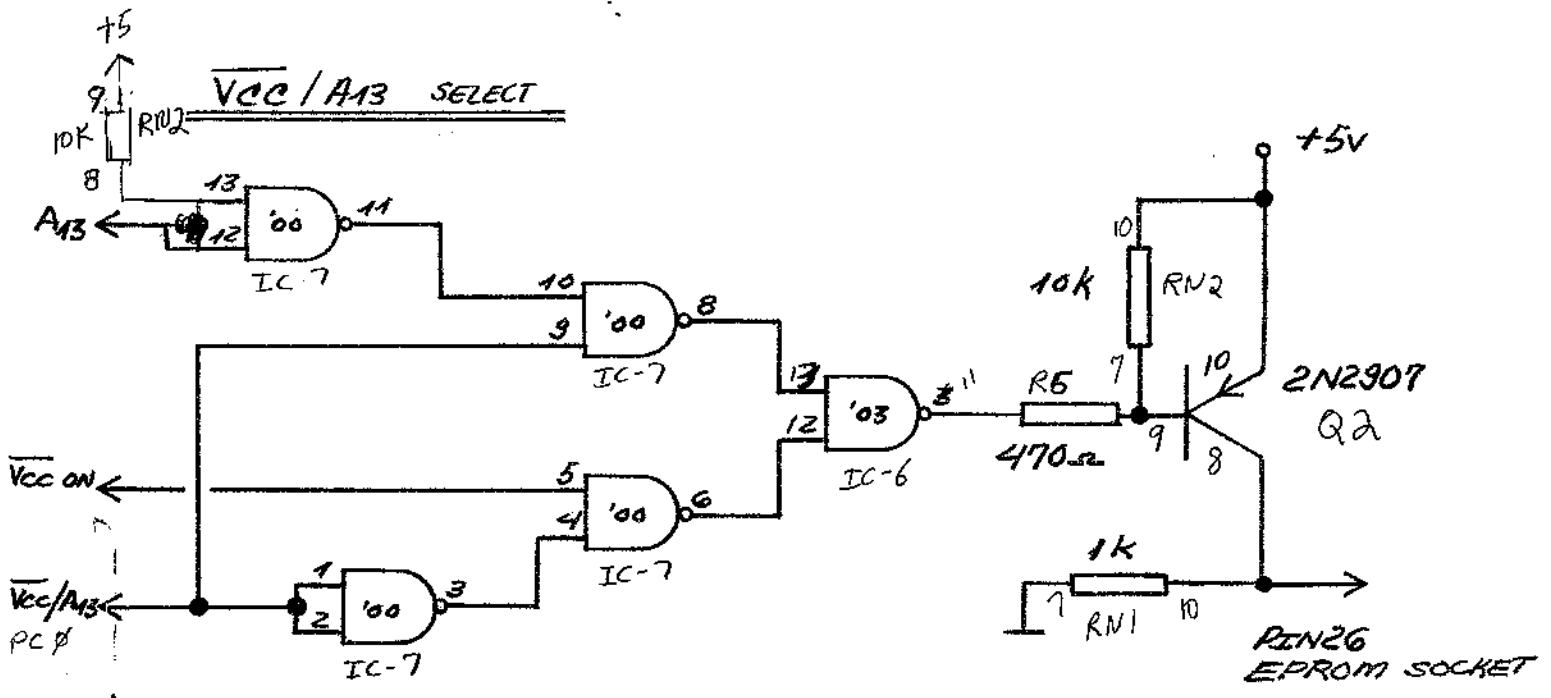


EPROM Programmer for the 57H11  
 Revision 2-15-89  
 Title : Voltage switches - pins 22, 23



IC4 = 7407 IC6 = 74LS03

*EPROM Programmer for the IBM PC/XT*  
 Revision: 9.19.87 PFS  
 Pins 26 + 27. ( $\overline{VCC}/A13$ ) + ( $\overline{PGM}/A14$ )



EPROM Programmer for the 5YM-1  
Revision: 3-15-88  
Title: Parts List.

IC<sub>1</sub> = 4040

IC<sub>2</sub> = 4040

IC<sub>3</sub> = 7407

IC<sub>4</sub> = 7407

IC<sub>5</sub> = 74LS139

IC<sub>6</sub> = 74LS03

IC<sub>7</sub> = 74LS00

IC<sub>8</sub> = 74LS00

IC<sub>9</sub> = LM317T

IC<sub>10</sub> = LM317T

K1 = EDR202A0500 DPST

Q<sub>1</sub> = MPQ2907

Q<sub>2</sub> = MPQ2907

D<sub>1</sub>, D<sub>2</sub>, D<sub>3</sub> = 1N914

RN<sub>1</sub> = 1k x 8 DIP RES NETWORK

RN<sub>2</sub> = 10k x 8 DIP RES NETWORK

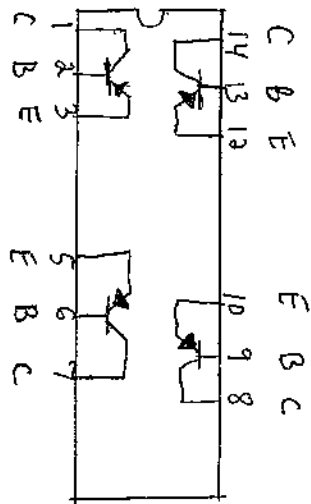
R<sub>3</sub>, R<sub>4</sub>, R<sub>5</sub>, R<sub>6</sub> = 470Ω

R<sub>7</sub>, R<sub>8</sub>, R<sub>9</sub> = 5kΩ TRIM POT

R<sub>10</sub>, R<sub>11</sub>, R<sub>12</sub> = 2kΩ TRIM POT

R<sub>13</sub>, R<sub>14</sub> = 240Ω

MPQ 2907



EDR202M0500

